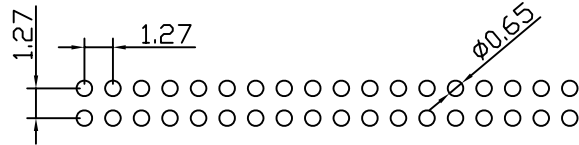
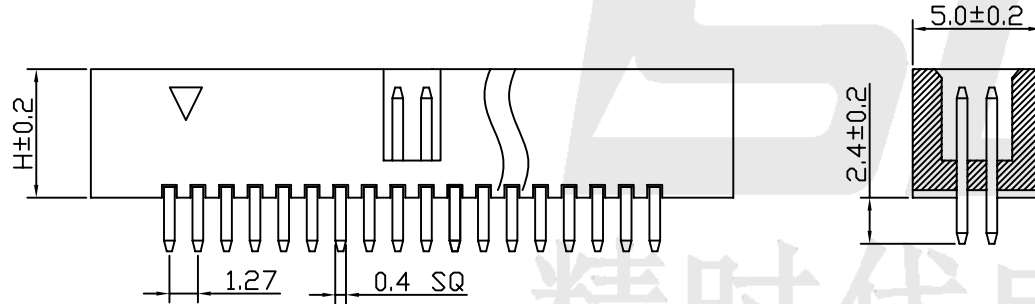
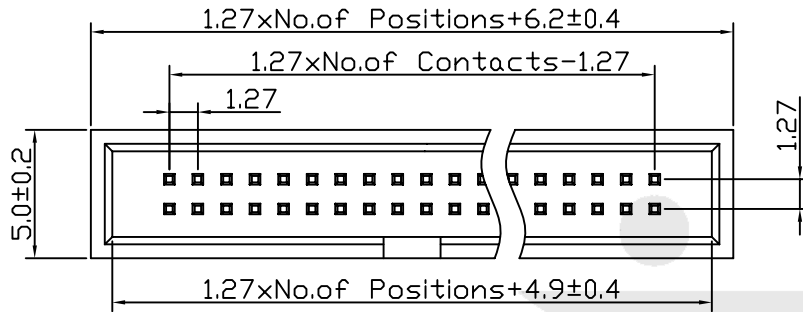


SPECIFICATIONS (技术参数)

Current Rating (额定电流): 1.0 Amps  
 Contact Resistance (接触电阻): 30mΩ Max  
 Insulator Resistance (绝缘电阻): 1000 MΩ min.  
 Dielectric Withstanding (耐压值): AC 300V/minute  
 Operating Temperature (工作温度): -40°C~+105°C



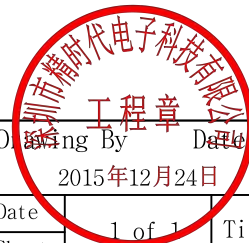
P.C.B LAYOUT

JSD FH XX X X X XX X X X XXX X

Brand 品牌  
 Box Header 筒牛插座  
 Pitch 间距 (Unit:mm)  
 10=1.00 12=1.27  
 20=2.00 25=2.54  
 Insulator Height 绝缘体高度 (Unit: mm)  
 A=4.90 C=5.80  
 B=5.60 D=7.10  
 Grooving direction 开槽方向  
 0=In the middle (中间)  
 1=On both sides of the (两边)  
 Add an insulator 添加绝缘体  
 0=There is no (没有)  
 1=There are (有)

Locate the column (定位柱)  
 0=No fixed 没有固定  
 1=Have a fixed 有固定  
 Pin length 针的总长度  
 Material Type 塑胶体材质  
 0=PBT 3=PA9T  
 1=PA46 4=LCP  
 2=PA6T  
 Contact Plated 镀层  
 0=Tin 锡 3=Gold 1.5U金 6=Gold 5U金  
 1=Gold 0.8U金 4=Gold 2U金 7=Gold 10U金  
 2=Gold 1.0U金 5=Gold 3U金 8=Gold 15U金  
 Mounting Style 安装方式  
 S=Straight DIP Type 180度直插板  
 R=Right Angle DIP Type 90度插板  
 M=SMT vertical stick Type 立贴板

Number of contacts 触点总数  
 Double row=06 to 100Pin



深圳市精时代电子科技有限公司  
 官网: www.jsdconn.com  
 电话: 0755-33583386/33583396  
 传真: 0755-33583356

客户料号:	无	Units	mm	Scale		Drawing By	Date	2015年12月24日		
客户规格:	无	Tolerance Unless		Otherwise Specified		Date	1 of 1	Title		
注:		.X	~	±0.30	Sheet	Third Angle Projection		平面设计	1.27x1.27筒牛180度直插中间开槽系列	
		.XX	~	±0.30			张火新	Drawing No.	JSDBH12X0XXXXXXX-001	REV
REV	ECN.NO.	.XXX	~	±0.30			18824345453	F/Name		B
		Angle	~	±0.30						